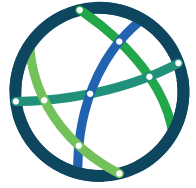


An Initiative of the Federal Ministry of
Education and Research

CLIENT II
International Partnerships for
Sustainable Innovations



SUSTAIN ABLY INNOVA TIVE

» **CLIENT II covers a wide range of topics that share the same goal: to drive innovation and sustainability with the respective partner countries.** «

Dr. Wolf Junker,
Federal Ministry of Education and Research

The world of CLIENT II

...revolves around international research collaborations on the following topics:



Resource efficiency and circular economy



Water management



Climate protection / energy efficiency



Adaptation to climate change



Land management



Sustainable energy systems



Natural hazards



For details on all projects, please visit:

www.bmbf-client.de/en

South America



MENA



Western Africa



Eastern Africa



Southern Africa



Central Asia



East Asia



Southeast Asia



What is CLIENT II?

The CLIENT II funding measure supports international partnerships in the climate, environment and energy sectors that develop **sustainable solutions to pressing challenges in more than 25 emerging and developing countries**. With a total amount of up to €135 million, the **Federal Ministry of Education and Research** (BMBF) is funding the development of technologies, products, services and system solutions, all of which are tested in practice on site.

Under CLIENT II, more than 50 projects are investigating innovative approaches to reduce environmental and climate change, use resources sustainably and provide access to clean energy as well as better protection against natural hazards. The thematic spectrum ranges from the energy-efficient recycling of wastewater to sustainable land management and the development of fully bio-based composites for the automotive industry. The projects are supported by two **accompanying scientific projects** and **local project offices**.

The cooperation between German and international partners from the fields of science and practical application helps create solutions that have been adapted to local conditions and are thus marketable. This also allows CLIENT II to contribute to strengthening education, research and innovation in Germany and in the partner countries.

CLIENT II is part of the „Research for Sustainability (FONA)“ BMBF strategy.

Goals

- Develop sustainable solutions with a leverage effect at local level
- Strengthen international cooperation between research and industry
- Contribute to global climate protection
- Expand value networks
- Open up new market potential for German companies
- Advance sustainability research in international competition

» As a project partner in Benin, we ensure that the relevant stakeholders come together to develop an information system that ensures the population is better prepared to manage flood hazards. «

Prof. Dr. Julien Adoukpe,
University of Abomey-Calavi, WASCAL, CLIMAFRI Project

CLIENT II in a global context

CLIENT II is part of Germany's international efforts to address pressing challenges and support sustainable change in emerging and developing countries. However, **CLIENT II projects also feed important findings back to Germany.** Project ideas and technologies that have been developed and tested in the partner countries may also become relevant for Germany in the future due to climate change.

CLIENT II helps manage global challenges and **contributes considerably to the Sustainable Development Goals (SDGs)**. With their innovative and sustainable solution approaches, each CLIENT II project impacts several SDGs at once. In total, the funding measure covers **all 17 global goals of the 2030 Agenda**, with a particularly large impact on the following:



Ensure access to affordable, reliable, sustainable and modern energy for all;



Ensure sustainable consumption and production patterns;



Take urgent action to combat climate change and its impacts; and



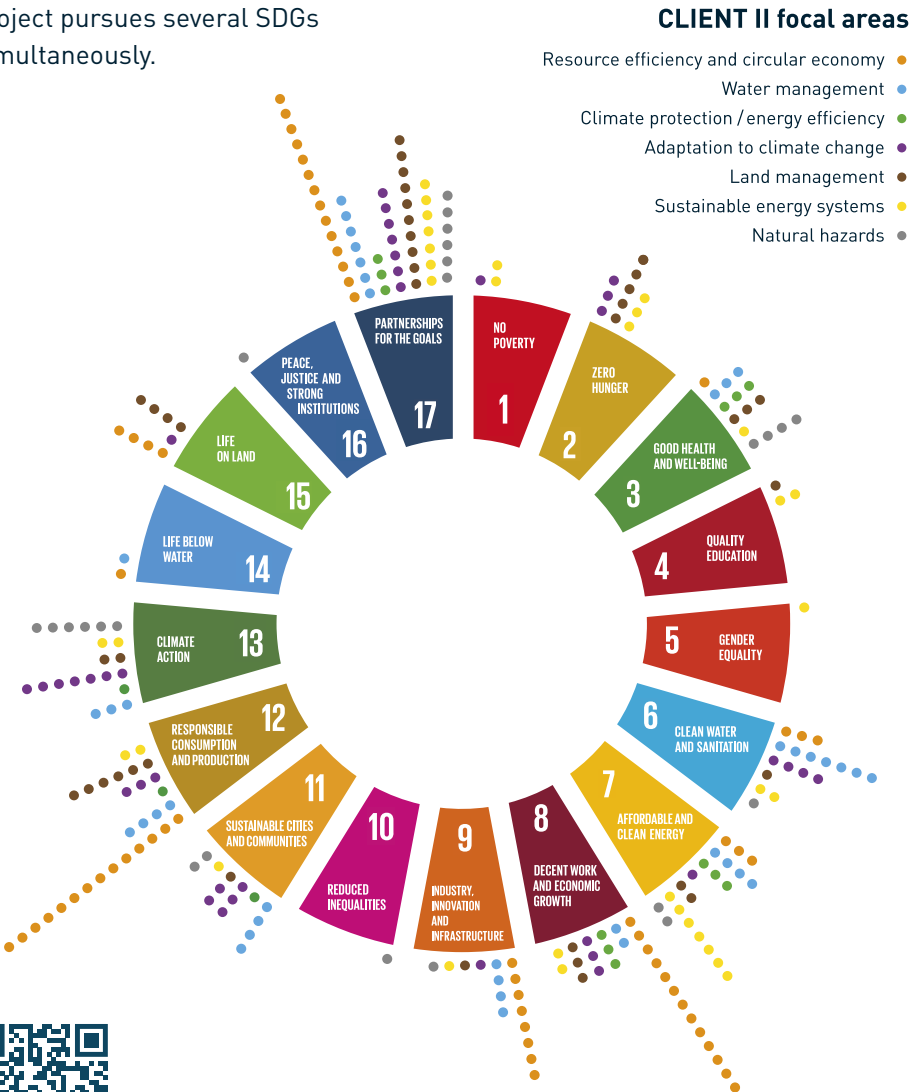
Strengthen the means of implementation and revitalise the global partnership for sustainable development.

»In our project, we are working on a solution to make wastewater treatment more energy efficient and to recover valuable resources from wastewater. In doing so, we are contributing to the achievement of several SDGs at once.«

Prof. Dr. Heidrun Steinmetz, Project Coordinator PIRAT-Systems

CLIENT II & the SDGs

The roadmap for the future of the global community is as diverse as the projects' thematic areas and solutions. Each CLIENT II project pursues several SDGs simultaneously.



More information on
the CLIENT II projects.

Together for a sustainable future

Global challenges require global responses: we can only create a sustainable and viable world through **cooperation and partnership**. CLIENT II brings the key players together and is active at various levels.

At the project level, German and international partners join forces to conduct research, qualify young scientists and thus strengthen **research cooperation between different countries and institutions**. The solutions developed in the project can open up **market potential and create jobs**. Connecting interdisciplinary actors promotes innovation and generates **scientific knowledge** that leads to greater **sustainability** at the political, economic and social levels.



» CLIENT II has given us the opportunity to gain research partners and open up new markets. Before the project had even been completed, we received requests from the industry to export the extraction technology developed in the project and to take over its marketing. «

Thorsten Brückner,
Sachsen-Leinen e.V., Project Coordinator KASHEMP and LINOKAS

For more information

...visit the CLIENT II website

www.bmbf-client.de/en



Legal Notice

Publisher

adelphi research gGmbH
10559 Berlin

Status

January 2021

Editorial office

adelphi research gGmbH
Project Management Jülich, Forschungszentrum Jülich GmbH

Design

undstoffers, Berlin

This brochure is part of the public relations work of the accompanying project Client2Works, funded by the Federal Ministry of Education and Research (BMBF); it is distributed free of charge and is not intended for sale.